

BATTERY PACK EOLT



About

The battery is one of the most important components in a car. The requirements in terms of quality and safety are very high, since problems in the field are costly and can damage the reputation significantly. HAHN End-of-Line-Testsystems are realized specifically according to customer requirements thanks to a modular concept. They ensure reliable and fully automated operation during both ramp-up and series production.



In cooperation with our customers we design the optimal test scenarios



We build the test stand with state-of-the-art equipment and focus on reliability



We automate and combine processes to reduce the time for each test cycle

Turn-key Solution



- One single source
- Modular concept design
- Manual to fully automated operation

Customized Solution



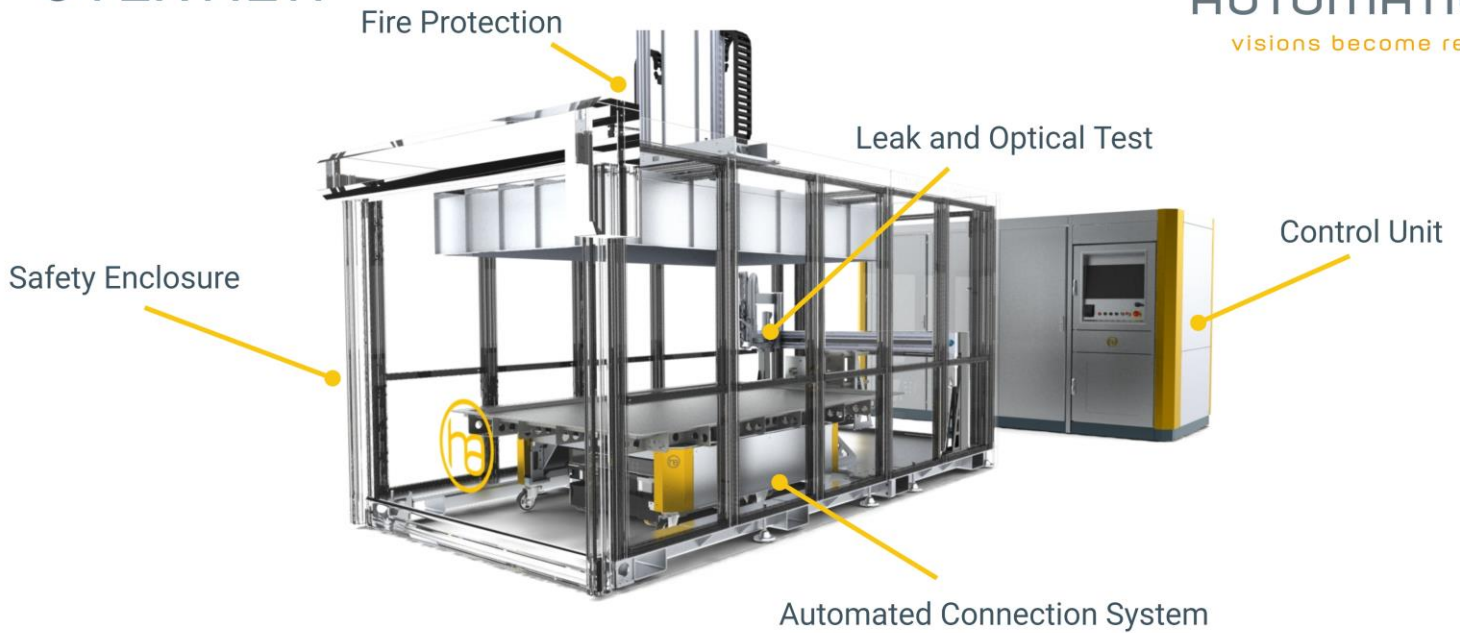
- Product specific tests
- For 90% of the battery packs on the market
- Adaptable for variants

Operation and Service



- Worldwide service support
- Retro-fits and Upgrades
- Product specific fixtures
- Optimizations

OVERVIEW



Scope of possible tests

Mechanical Properties

- Leak Test: Housing
- Leak Test: Cooling System

Optical Properties

- Tags/Sticker/Labels
- Damages
- Correct Assembly

Electrical Properties

- Insulation Test

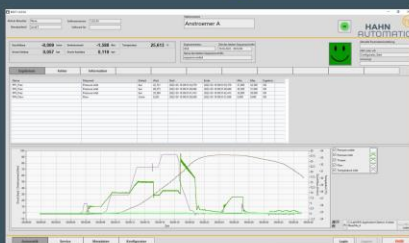
Battery Management System

- Communication
- Evaluation of Sensors
- Flashing

Performance Tests

- Charge
- Discharge
- Peak Power Test

HAHN Testing Software



- Easy-to-use user interface
- No-code programming
- Modular software platform
- Based on LabVIEW(R)
- Traceability concepts

Automated Operation



- Handling via AGV
- Automated Connection
- Sophisticated Fire Protection Concept

Leak and Optical Tests



- 3-Axis Portal
- Rotary Unit
- For Leak and Optical Tests