



## About

Pumps are used in many applications and supply systems with media such as oil and water. HAHN End-of-Line-Testsystems support you in ensuring reliable long term function and operation within narrow tolerance ranges. From prototyping to series production, HAHN realizes test systems specifically according to customer requirements. Thanks to a modular concept, HAHN is capable of designing End-of-Line Testsystems for any type of pump.



In cooperation with our customers we design the optimal test scenarios



We build the test stand with state-of-the-art equipment and focus on reliability



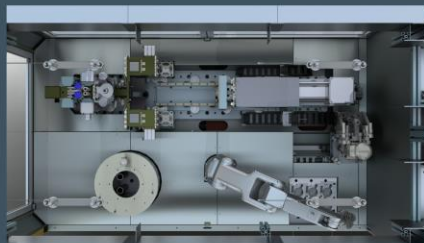
We automate and combine processes to reduce the time for each test cycle

## Turn-key Solution



- One single source
- Modular concept design
- Manual to fully automated operation

## Customized Solution



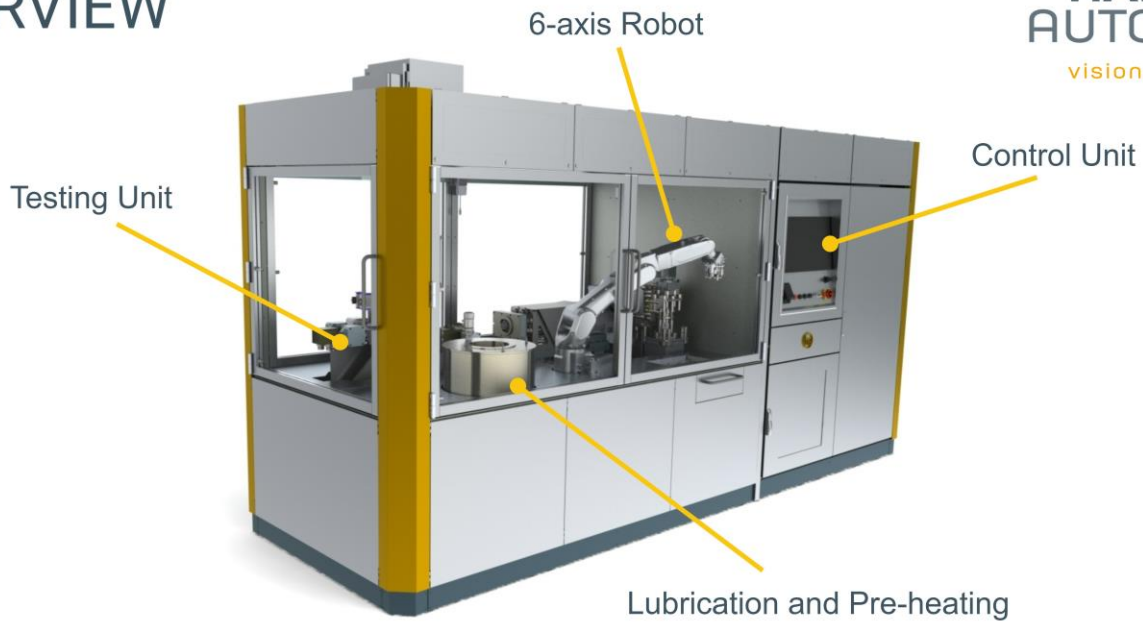
- Product specific tests
- For all types of pumps
- Adaptable for variants

## Operation and Service



- Worldwide service support
- Retro-fits and Upgrades
- Product specific fixtures
- Optimizations

# OVERVIEW



## Scope of possible tests

### Mechanical Properties

- Leak Test: Housing

### Optical Properties

- Tags/Sticker/Labels
- Damages
- Correct Assembly

### Electrical Properties

- Insulation Test

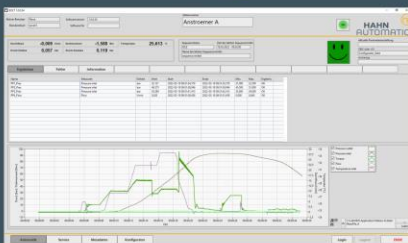
### Functional Tests

- Flow Rate
- Pressure
- Electronics
- Structure-Borne Sound

### Performance Tests

- Speed
- Torque

## HAHN Testing Software



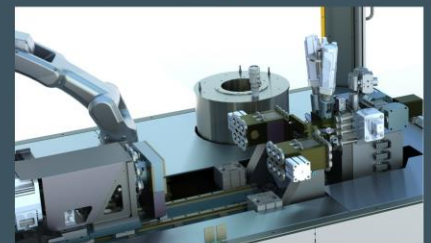
- Easy-to-use user interface
- No-code programming
- Modular software platform
- Based on LabVIEW(R)
- Traceability concepts

## Media Conditioning



- Tempering and cleaning
- For oil, water or glycol
- 15 to 120 degree (+/- 0,5)
- Tank scalable up to 600l
- Media recovery circuit

## Testing Unit



- Fully automated testing
- Easy product changeover
- Lubrication and pre-heating
- Fast changeovers
- Generous access